



# Associates In Emergency Medical Education, Inc

## Course Outline

### Step 1 - Assess:

**C - A - B**

*C = Circulation*

*A = Airway*

*B = Breathing*

### Step 2 - Delegate:

**OMI vs ICEM**

*O = Oxygen*

*I = IO / IV*

*M = Monitor*

*C = Compressions*

*I = IV / IO*

*E = ET*

*M = Monitor*

### Step 3 - Treat:

**Stable vs Unstable**

*V = Volume*

*R = Rhythm*

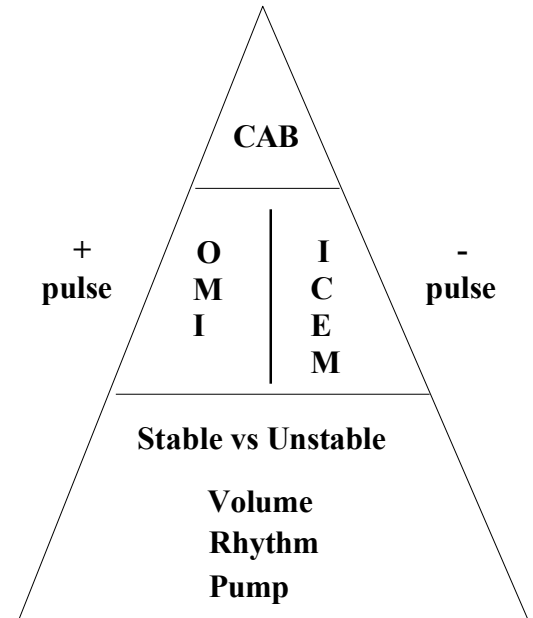
*P = Pump*

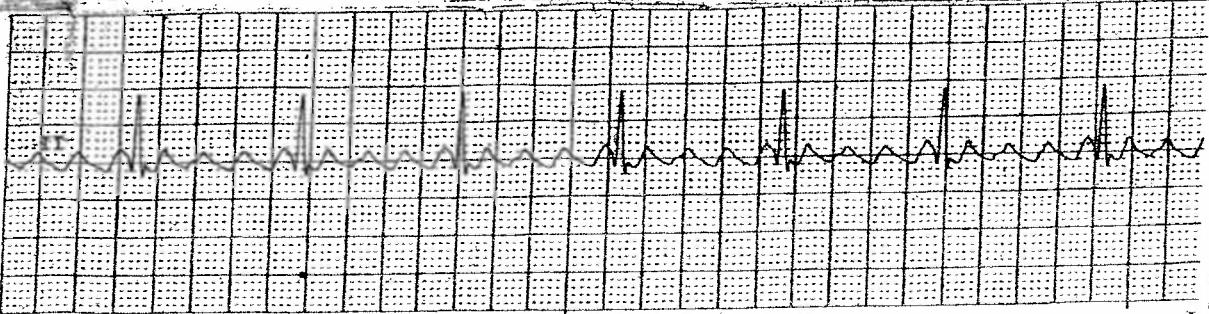
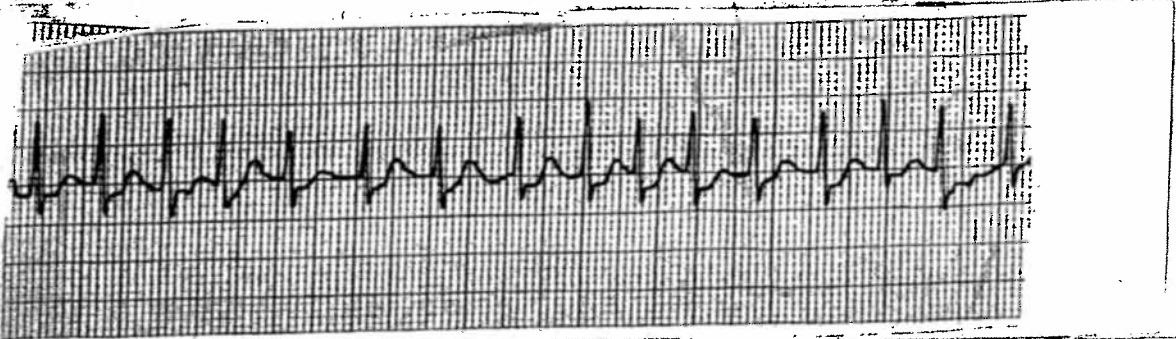
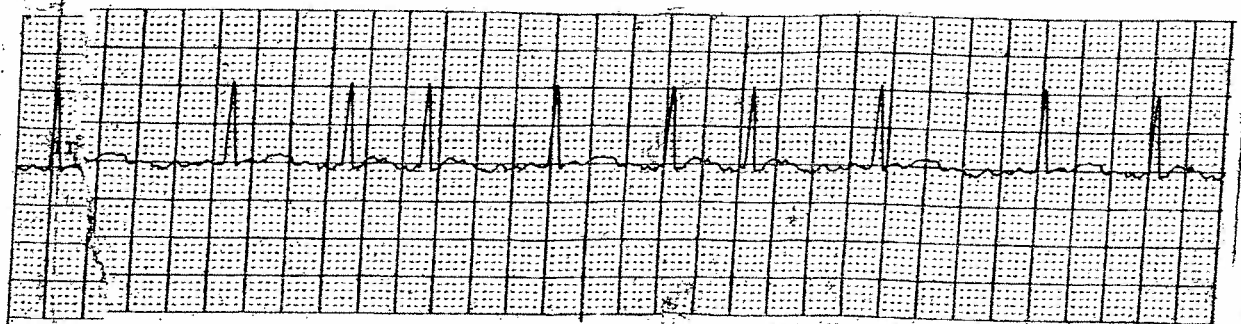
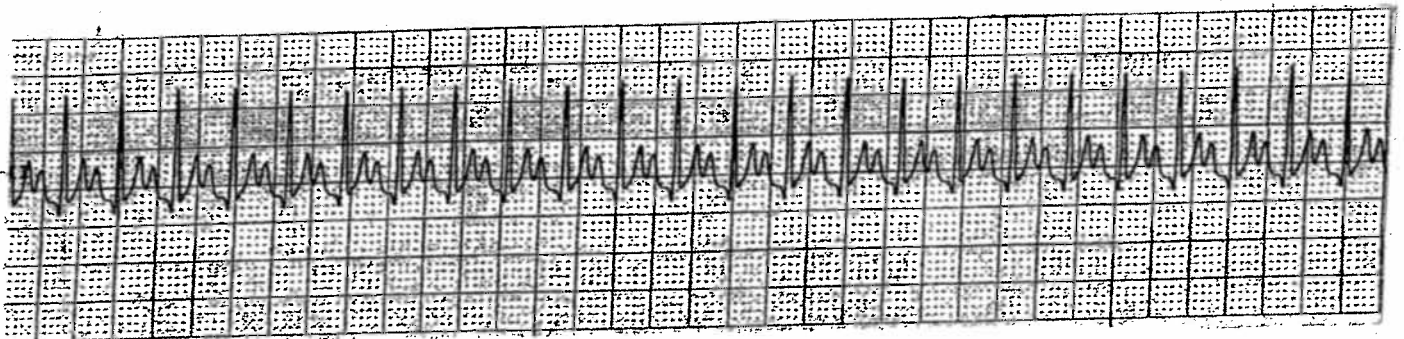
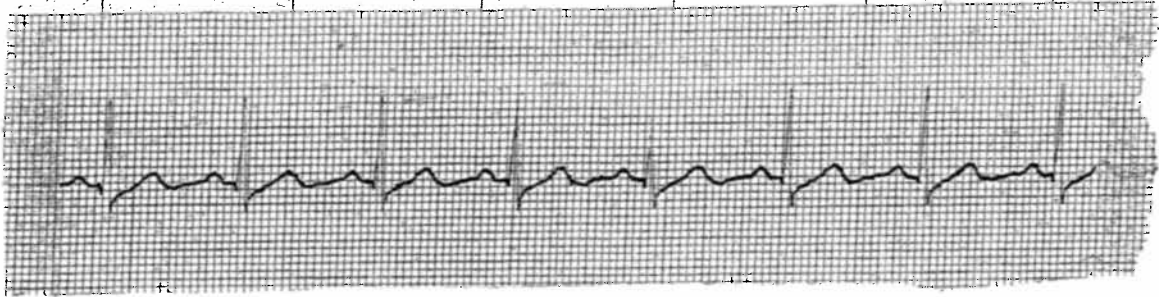
- Food Groups

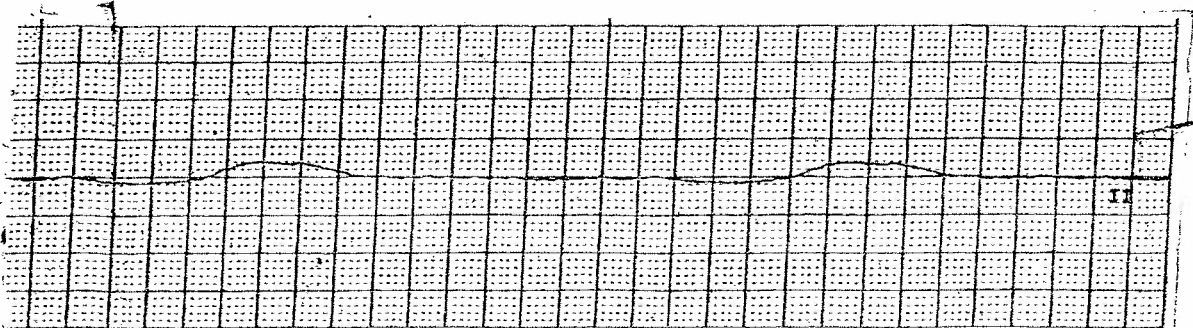
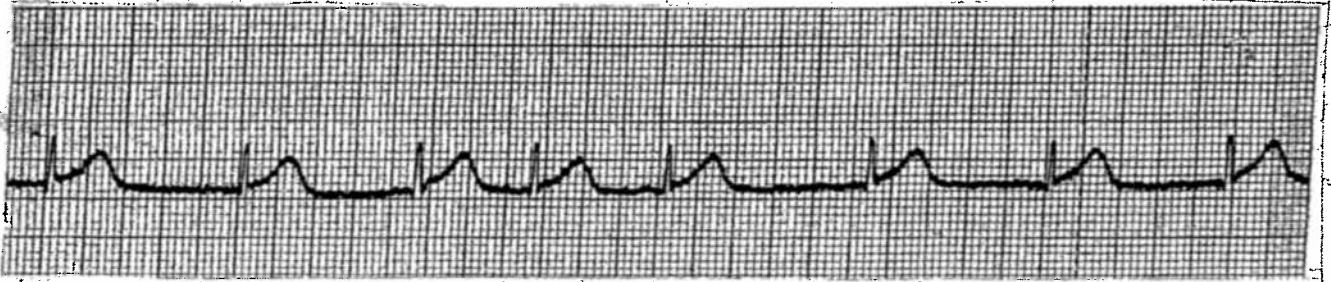
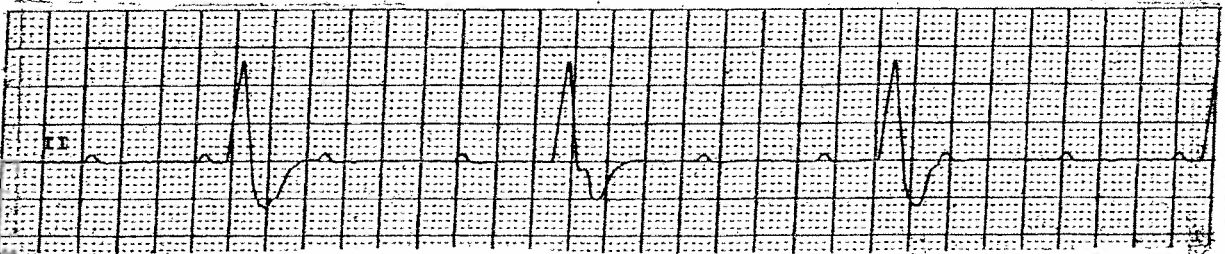
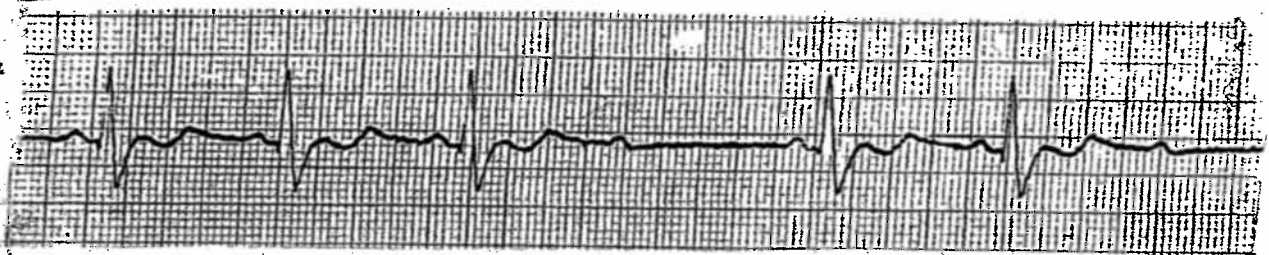
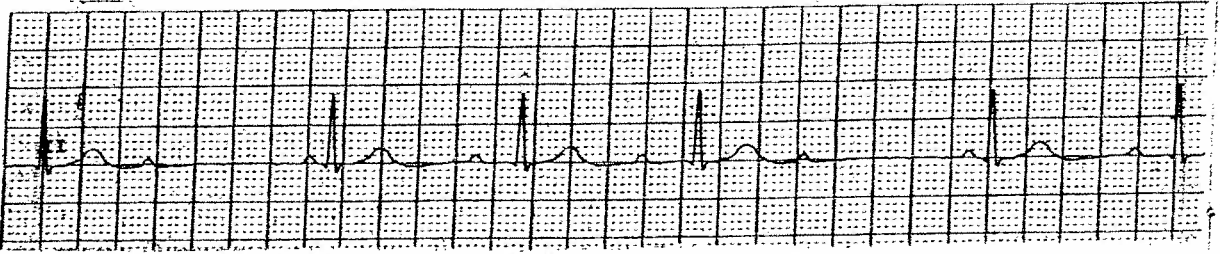
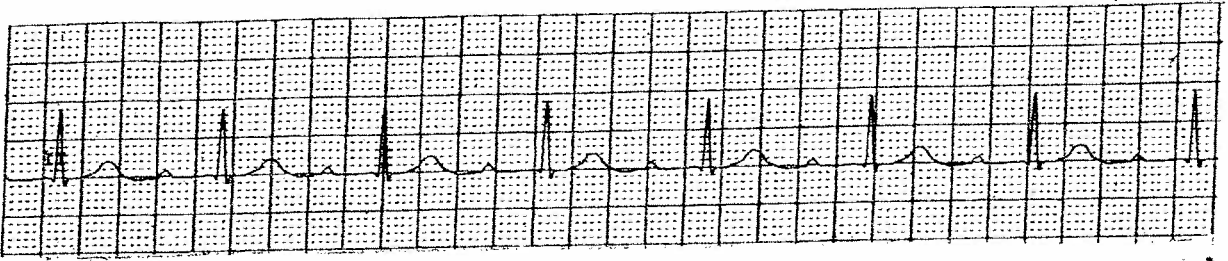
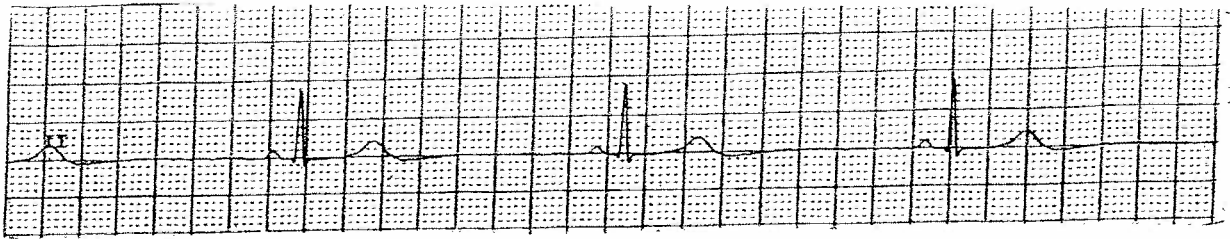
- Temperature

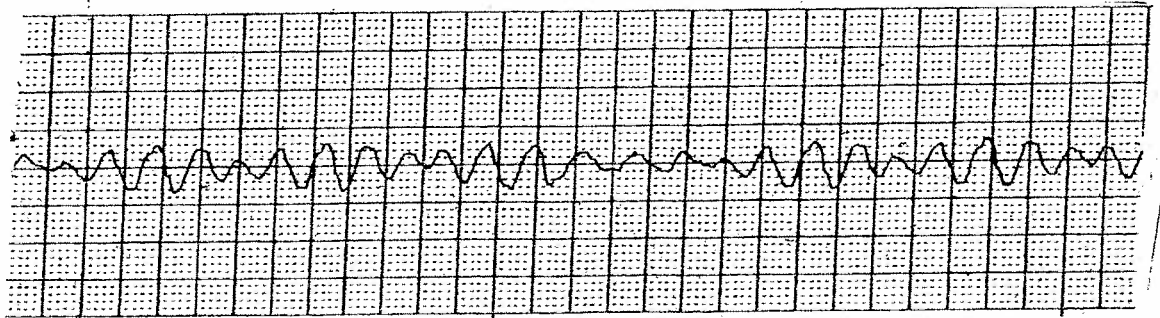
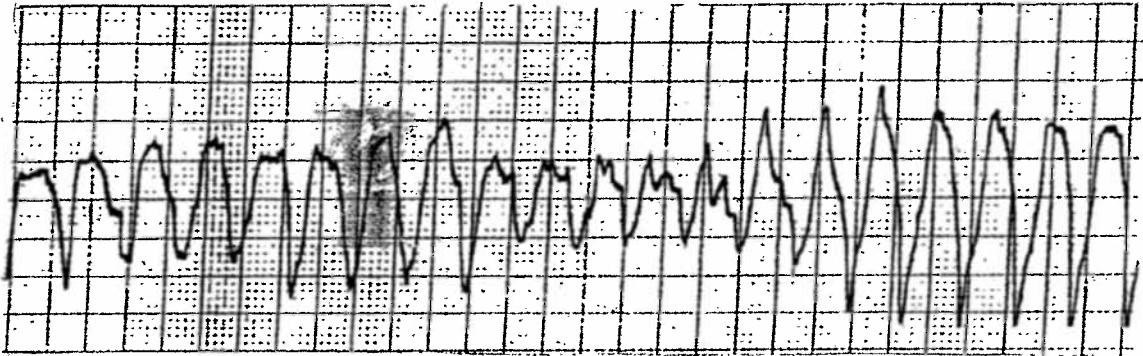
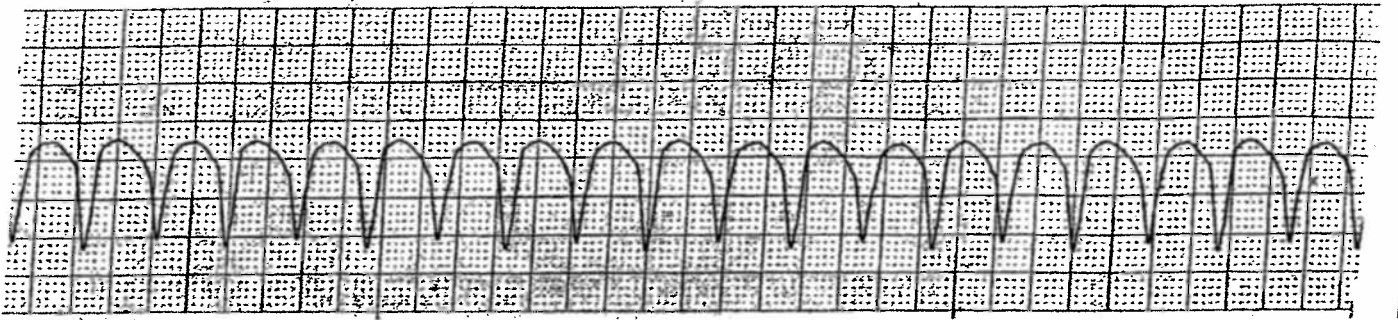
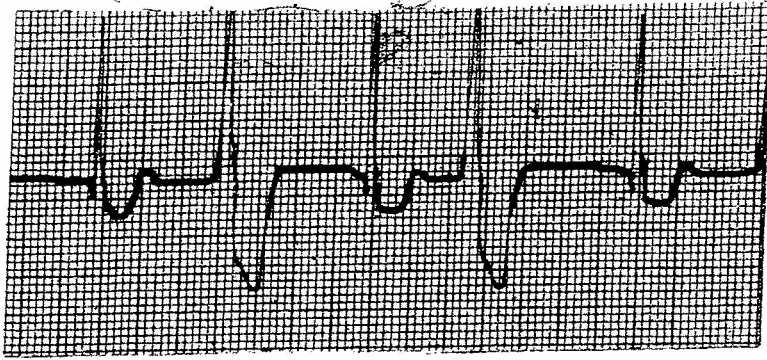
- Pressure

- Acid Base









**Claiming AHA Card(s):**  
[ecards.heart.org / student / myecards](https://ecards.heart.org/student/myecards)  
(type in name & email)